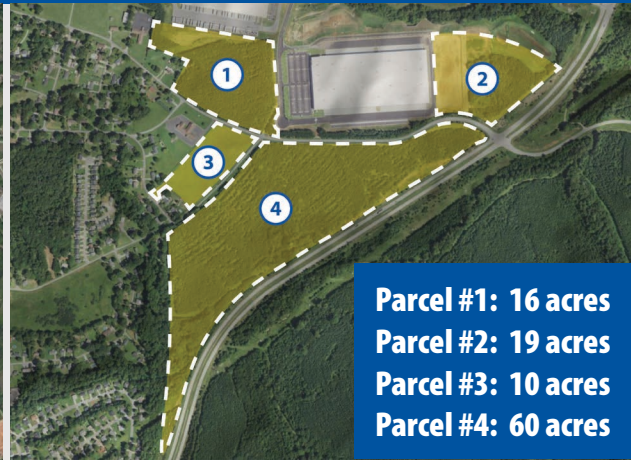


TRACT B

Multiple Parcels Available

Best for Logistics or Distribution Facilities

Located in Federal Opportunity Zone



Parcel #1: 16 acres
Parcel #2: 19 acres
Parcel #3: 10 acres
Parcel #4: 60 acres

County

Spartanburg

City Limits

City of Greer

Location

Southwest corner of Hwy 290 and J. Verne Smith Pkwy

Zoning

City of Greer - I1

Spartanburg County

Access/Frontage

Hwy 290, J. Verne Smith Pkwy, Victor Hill Rd

Runway Access

No

Railway Access

Yes - Direct Access to Norfolk Southern at
South Carolina Inland Port

Distance to Interstate

I-85: 2.9 miles, I-26: 14.2 miles

Topography

Level to rolling

Flood Plain

No

Wetlands/Streams

Ponds and small streams

Shape

Irregular

GSP Airport Environs Area

Yes

Building Potential

Excellent

Utilities

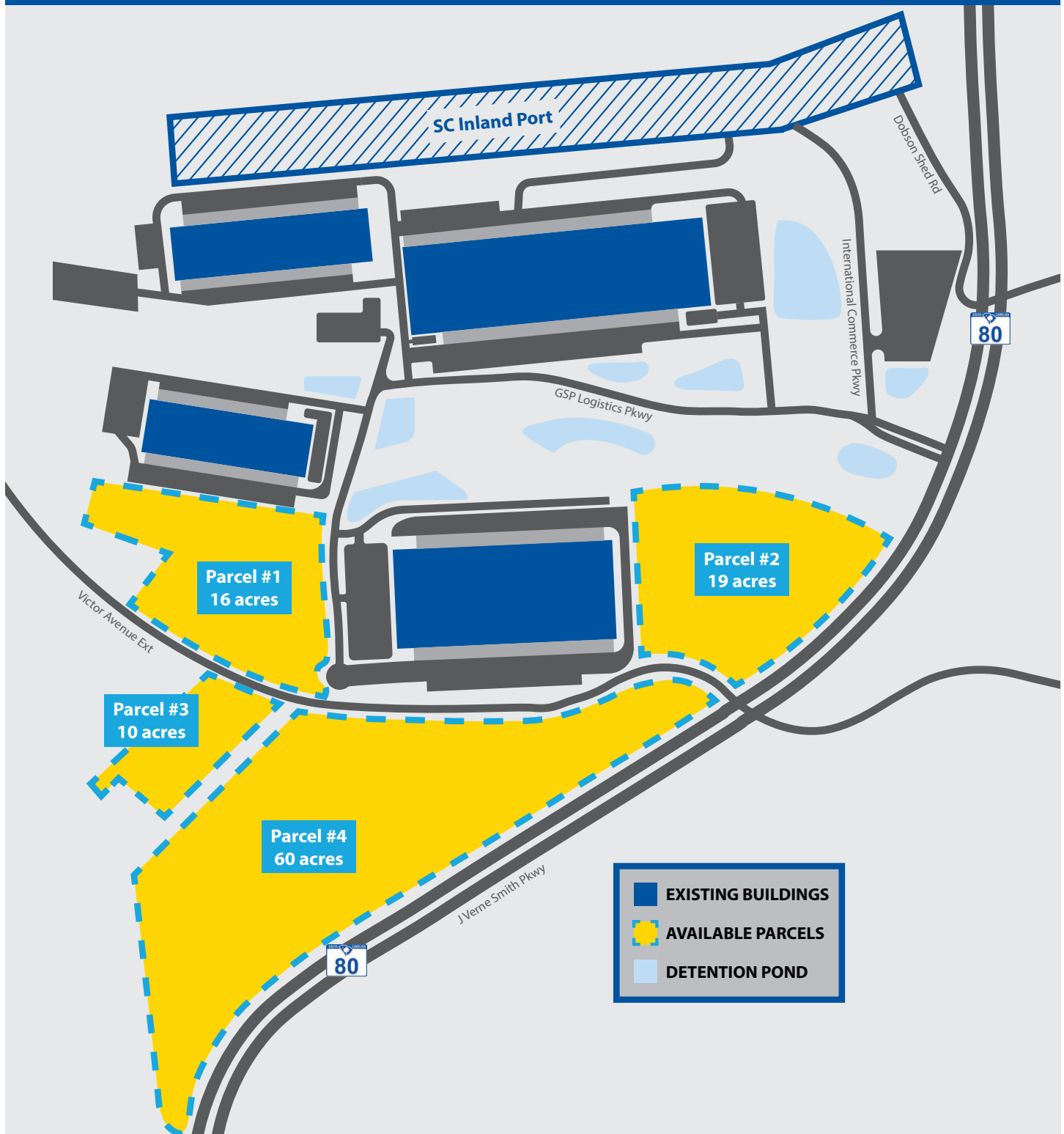
All available



GSP INTERNATIONAL
AIRPORT
ROGER MILLIKEN FIELD

Ryan Clark | Real Estate & Leasing Manager
Greenville-Spartanburg International Airport
rclark@gspairport.com | 864.848.6208

Logistics Park Map



GSP INTERNATIONAL
AIRPORT
ROGER MILLIKEN FIELD

Ryan Clark | Real Estate & Leasing Manager
Greenville-Spartanburg International Airport
rclark@gspairport.com | 864.848.6208

Area Industry Map



Contact:

Ryan Clark
Real Estate & Leasing Manager
Greenville-Spartanburg International Airport
Email: rclark@gspairport.com
P: 864.848.6208